



**Atlantic County
Department of Public Safety
Office of Emergency Preparedness**

Standard Operating Guideline

Subject:

Task Force Staging and Deployment Plan

Purpose:

To identify locations for the staging and movement of various emergency services task forces into and out of Atlantic County. This guideline will apply to resources under the coordination of Atlantic County Emergency Management that are: requested as “incoming” resources; for deployment in-County; or “out going” resources as part of mutual aid. This guideline will apply to, but not be limited to: Fire Service, Emergency Medical Services, Law Enforcement, Public Works, Emergency Management.

Procedure:

1. Upon the request for a task force activation, into or out of the county, the County Emergency Operations Center will be activated, to Level II, to facilitate and coordinate the request. In some circumstances, in county, this coordination may occur from a deployed Mobile Field Unit.
2. The respective Coordinator (Fire, EMS, Law Enforcement) will respond to the EOC, or Mobile Field Unit location, to manage the request with the assistance of the EOC Operations Officer and/or Duty Officer.
3. The Coordinator will determine:
 - 3.1.1. The resources needed (i.e. task force, strike team, etc.)
 - 3.1.2. The agencies providing resources if not pre-planned.
 - 3.1.3. The staging area location from which the resources are to be deployed from or brought into.
4. The Coordinator will make the appropriate resource request.
5. The Coordinator will develop a movement plan for the task force assignment, identifying the best routes of travel, locations for staging and deployment, etc. This will be developed in writing for the task force assignment.
6. The Coordinator will deploy a second or third coordinator to the staging area. They will be responsible for:
 - 6.1.1. Accountability of task force personnel and equipment

- 6.1.2. Guiding the task force into the affected area or to the staging or deployment location for out of county responses
 - 6.1.3. Deployment Coordinators can be utilized from multiple disciplines to accomplish these tasks.
7. Upon deployment of the task force from the staging area, the Coordinator will ensure that the EOC Operations Duty Officer has been briefed on the resources deployed, cover-up assignments as needed and any special instructions for the task force.

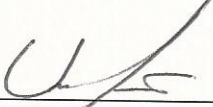
Staging Locations:

- 1. Galloway Township, GSP, Galloway Rest Area, MM 40
- 2. Hamilton Township, ACE, Farley Plaza, MM 21.2
- 3. Pleasantville, ACE, Interceptor Lot, MM 4
- 4. Somers Point, Route 9 between CR 559 and GSP (adjacent to Somers Point Lumber)
- 5. Buena Borough, Vineland Truck Stop, 760 Harding Highway (Route 54 and 40)
- 6. Hammonton, Wal-Mart, Route 30 and Route 206
- 7. Egg Harbor Township, Anthony Canale Training Center, 5033 English Creek Avenue
- 8. Hamilton Township, Hamilton Mall, 4403 Blackhorse Pike, Mays Landing

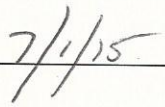
SOG Review:

This SOG will be reviewed and updated annually by the County Emergency Management Coordinator. Changes, additions or deletions may be applied at any time based on the result of actual occurrences or exercises.

Approved: _____


Vincent J. Jones, III
Atlantic County
Emergency Management Coordinator

Date: _____



Staging Area #1, GSP Galloway Rest Area, MM 40



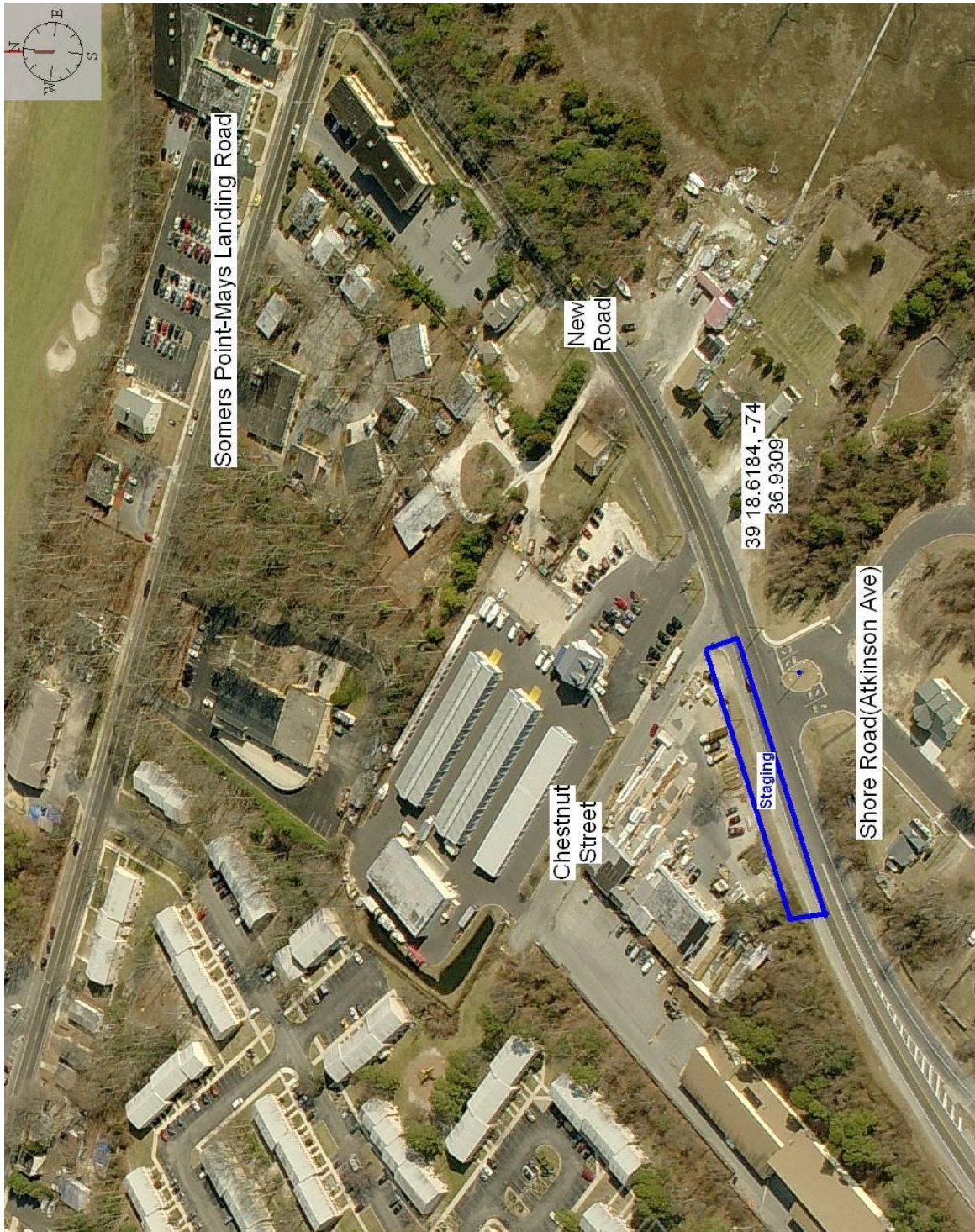
Staging Area #2, ACE- Farley Plaza, MM 21.2



Staging Area #3, ACE- Interceptor Lot, MM 4



Staging Area #4, Somers Point, Route 9 between CR 559 (ML/SP Road) and GSP



Staging Area #5, Buena Borough, Vineland Truck Stop, 760 Harding Hwy, Buena (Route 54 and Route 40)



Staging Area #6, Hammonton, Wal-Mart, Route 30 and Route 206



Staging Area #7, Egg Harbor Township, Anthony Canale Training Center, 5033 English Creek Avenue



**Staging Area #8, Hamilton Township, Hamilton Mall,
4403 Black Horse Pike, Mays Landing**

